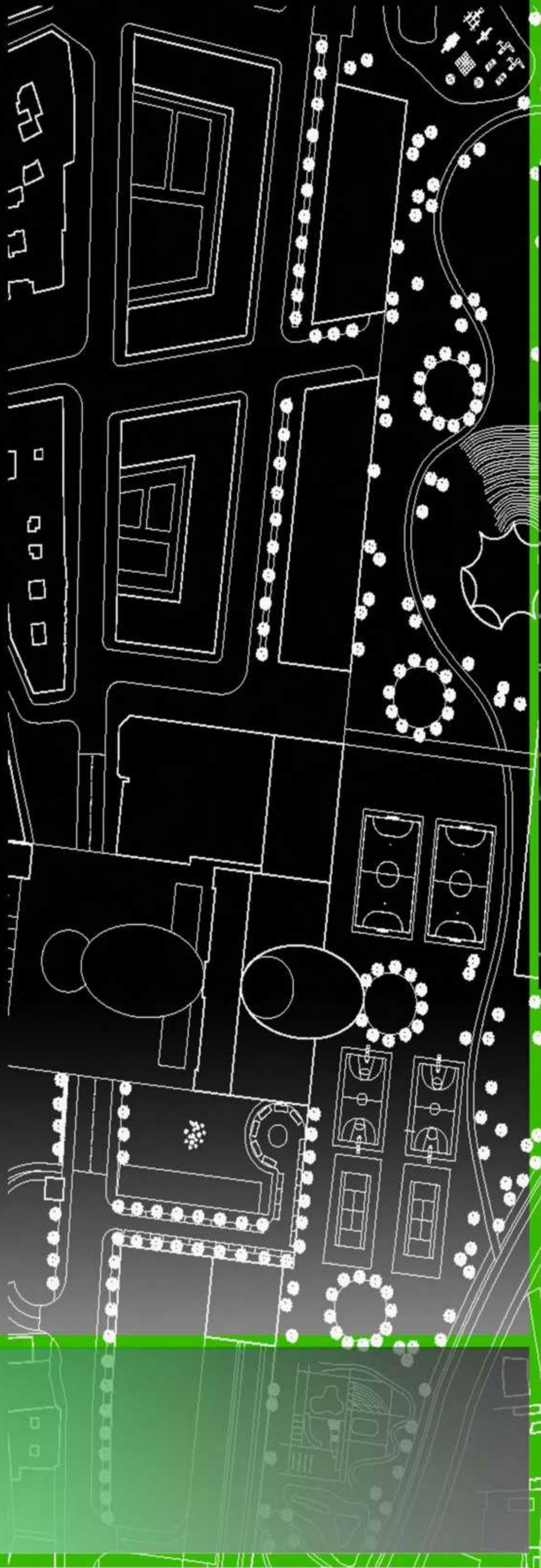
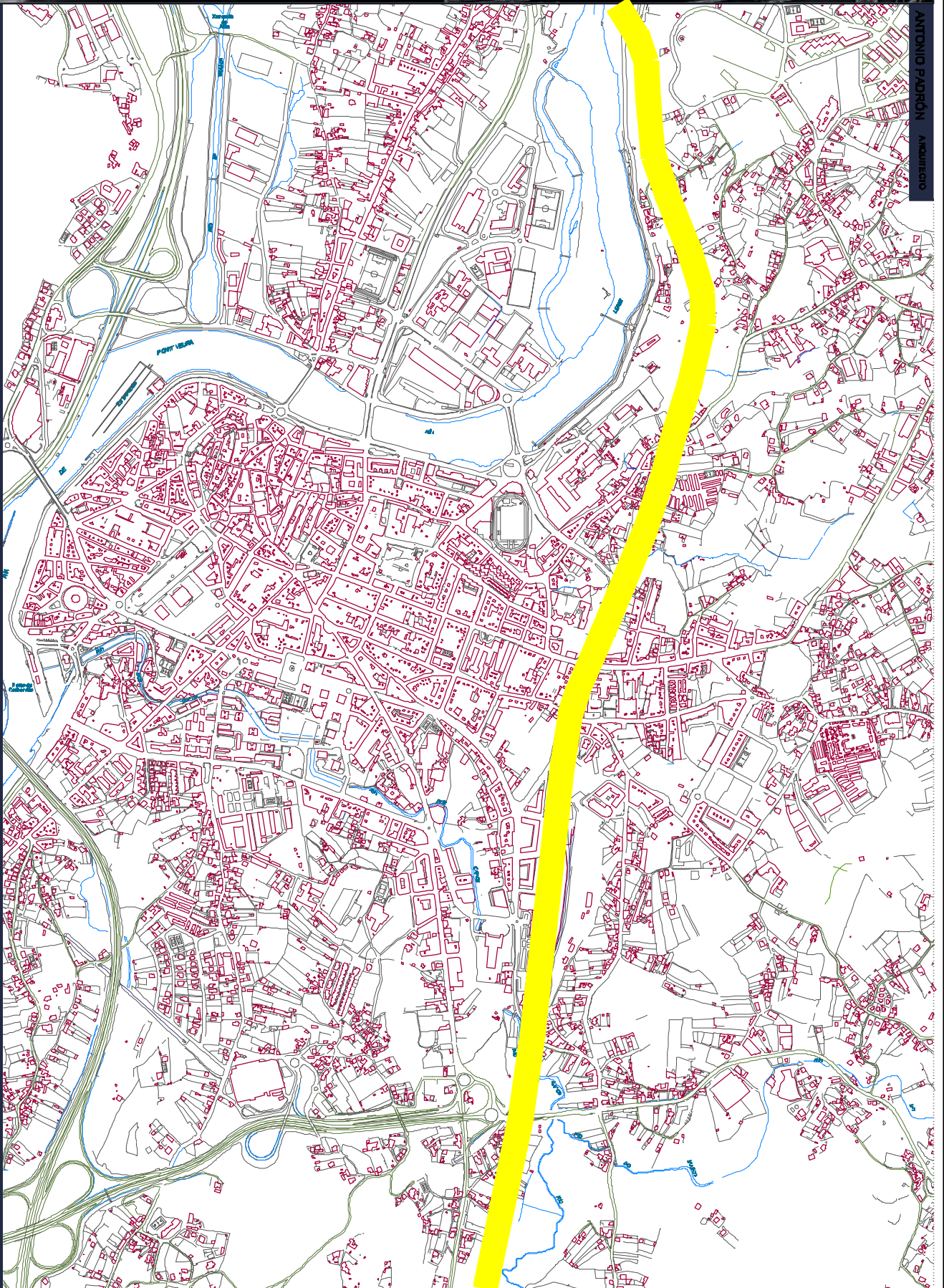


CENTRO INTERMODAL DE TRANSPORTES A PARDA



CENTRO INTERMODAL DE TRANSPORTES A PARDA

ANTONIO PADRÓN Arquitecto

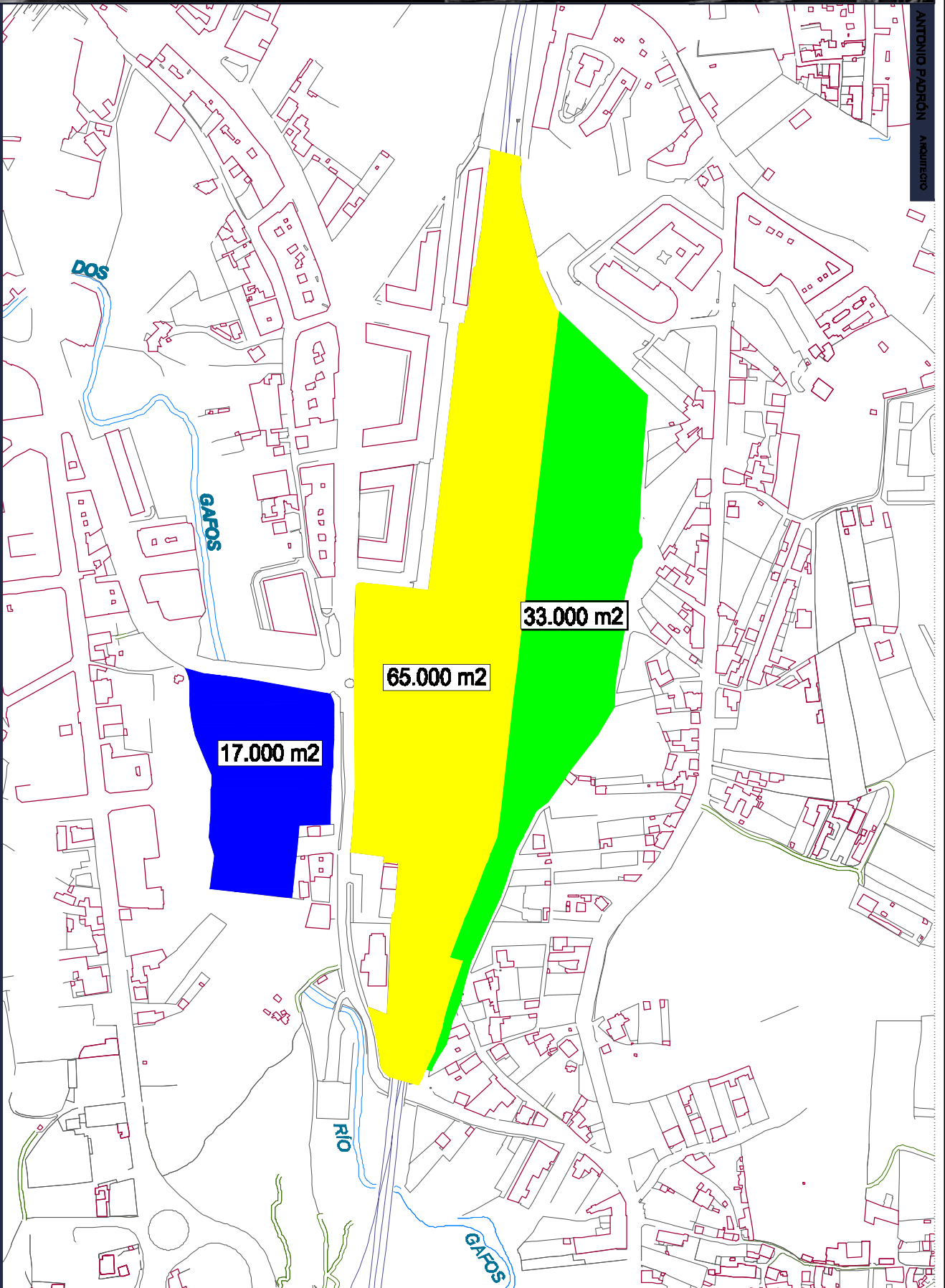


SITUACIÓN ACTUAL

VIA TREN

CENTRO INTERMODAL DE TRANSPORTES A PARDA

ANTONIO PADRÓN
ARQUITECTO

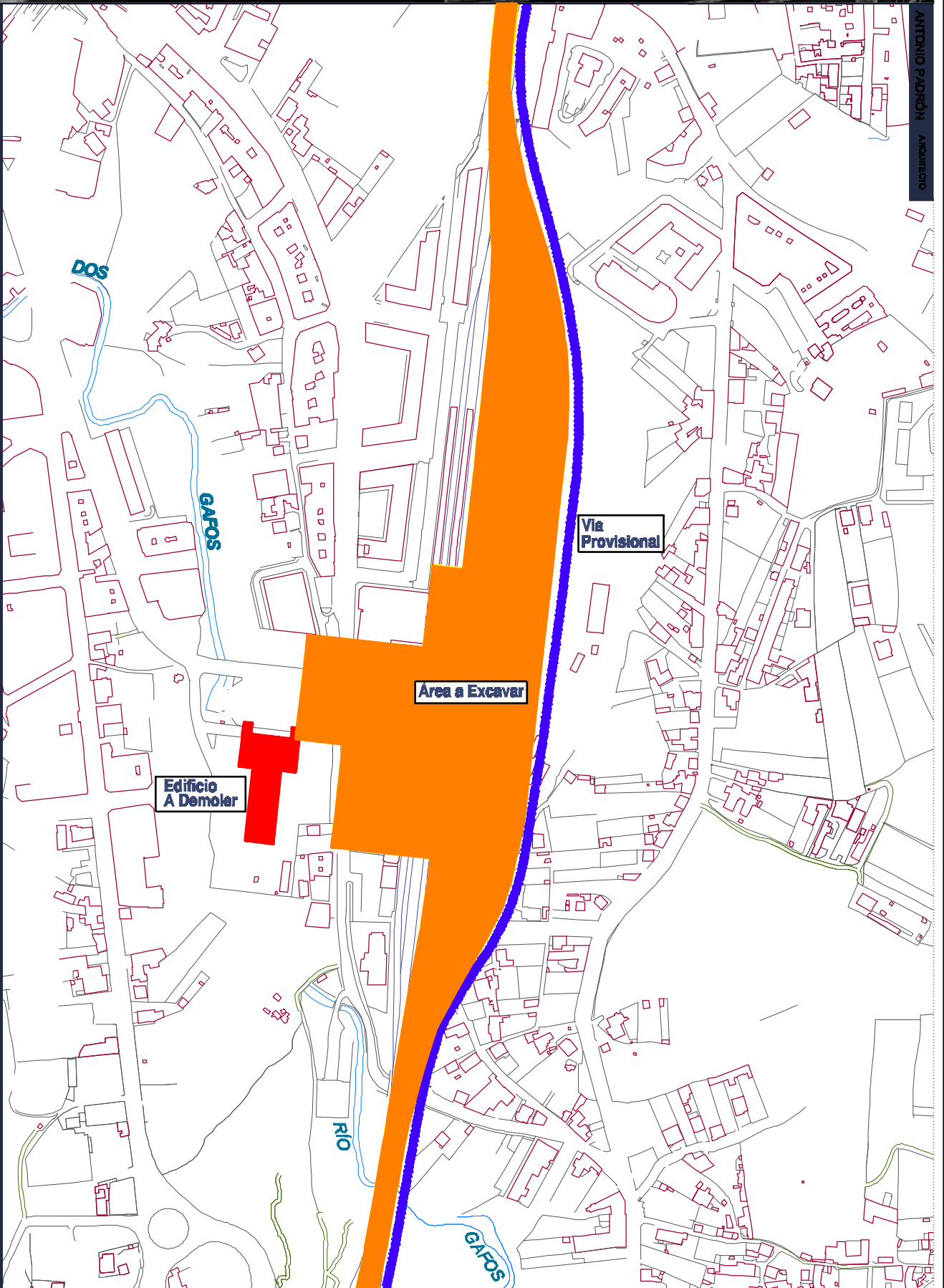


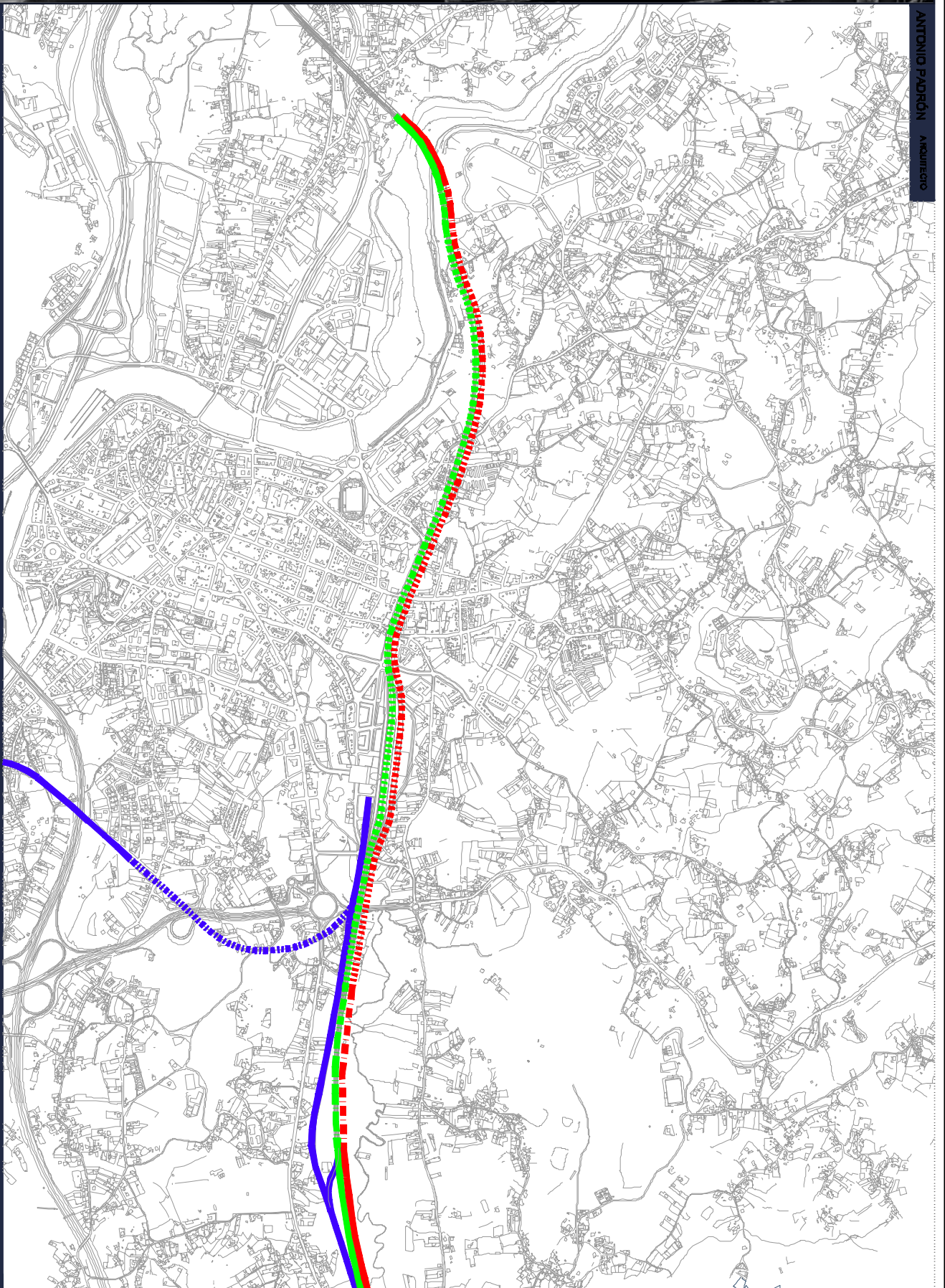
SUPERFICIES

E. AUTOBUSES

RENFE

CONCELLO

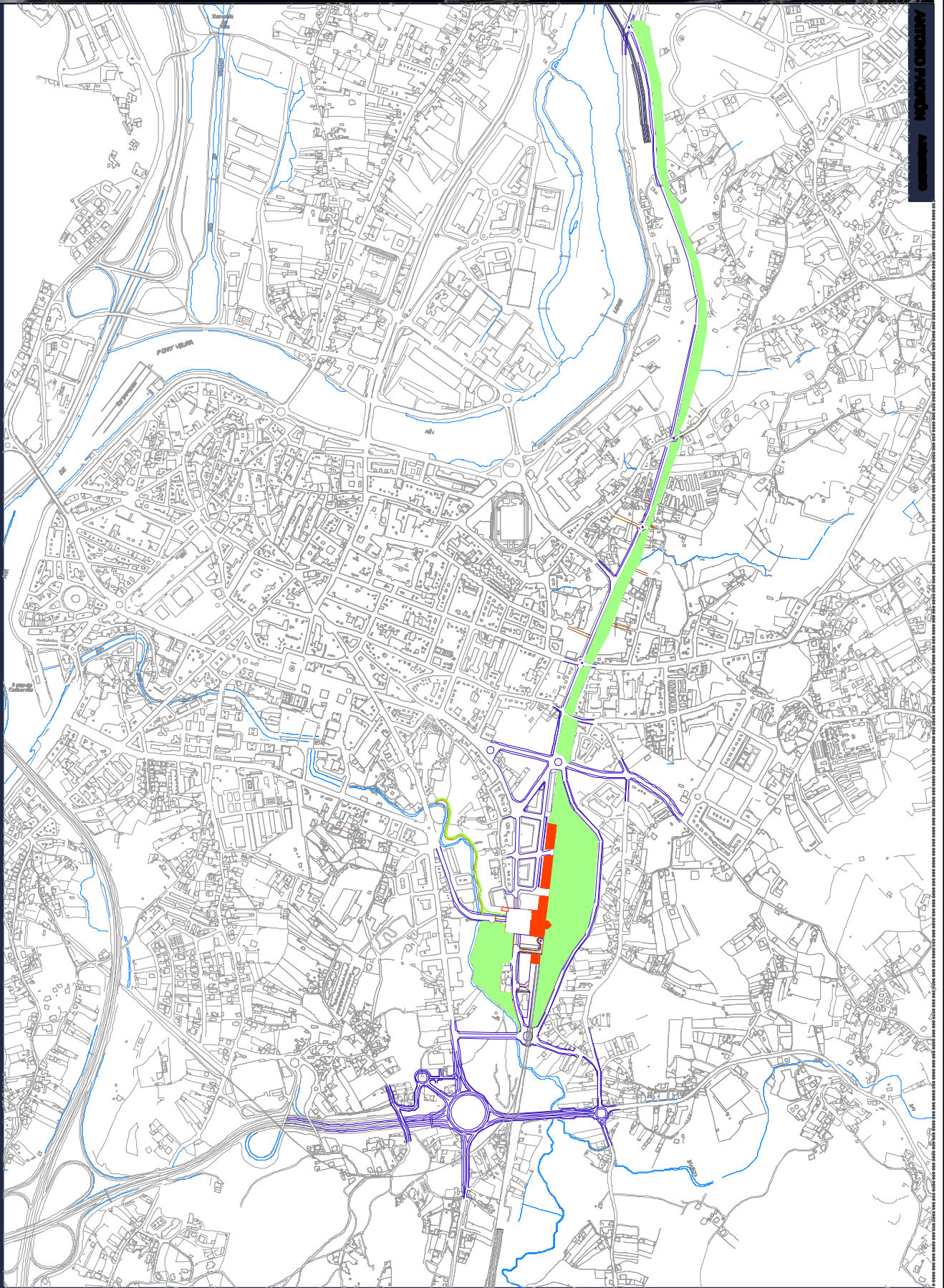




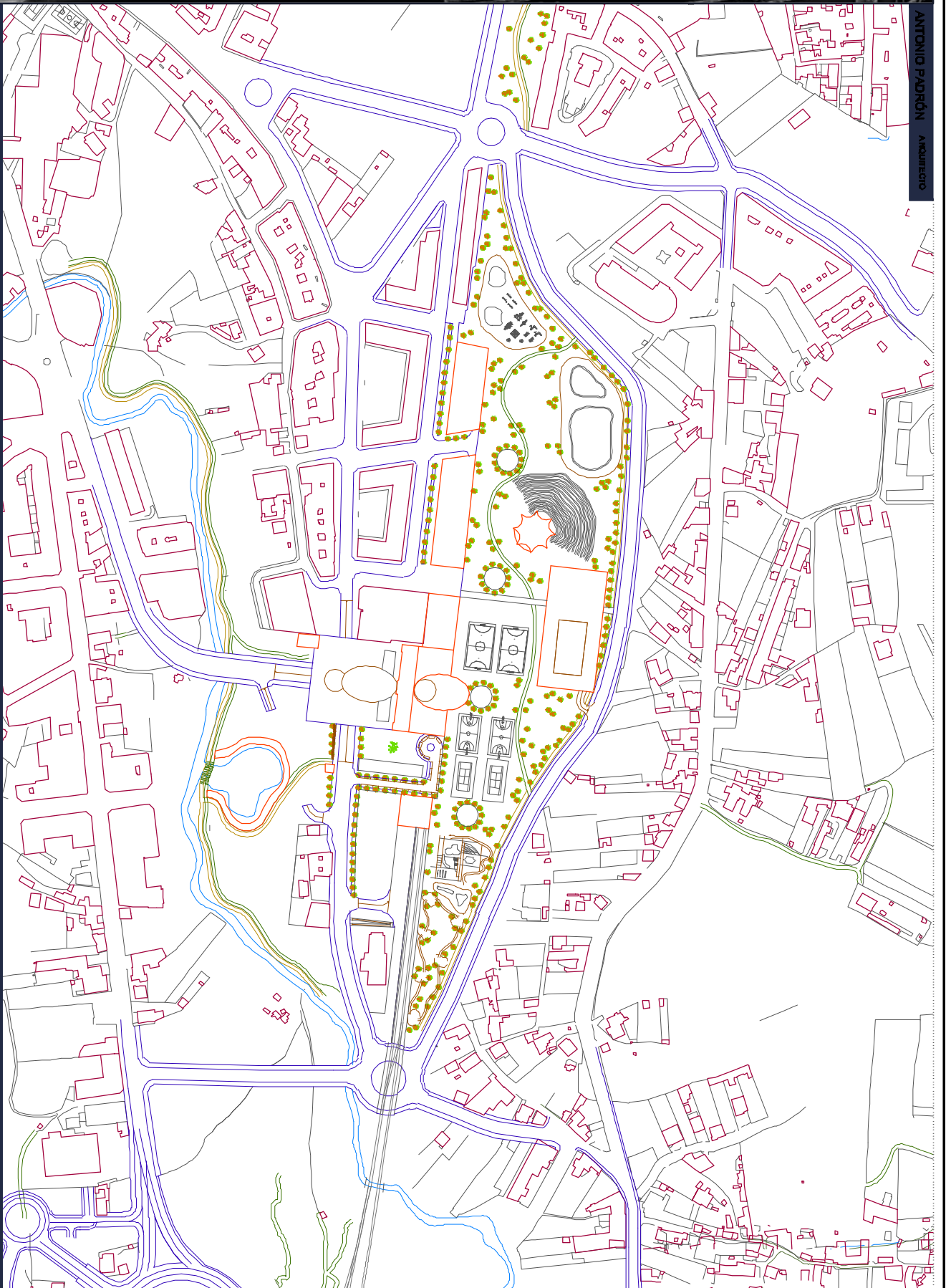
CIRCULACIÓN FERROVIARIA

- VIA MERCANCIAS (Ancho Ibérico)
- VIA AVE
- VIA PASAXEIROS (Ancho Ibérico)

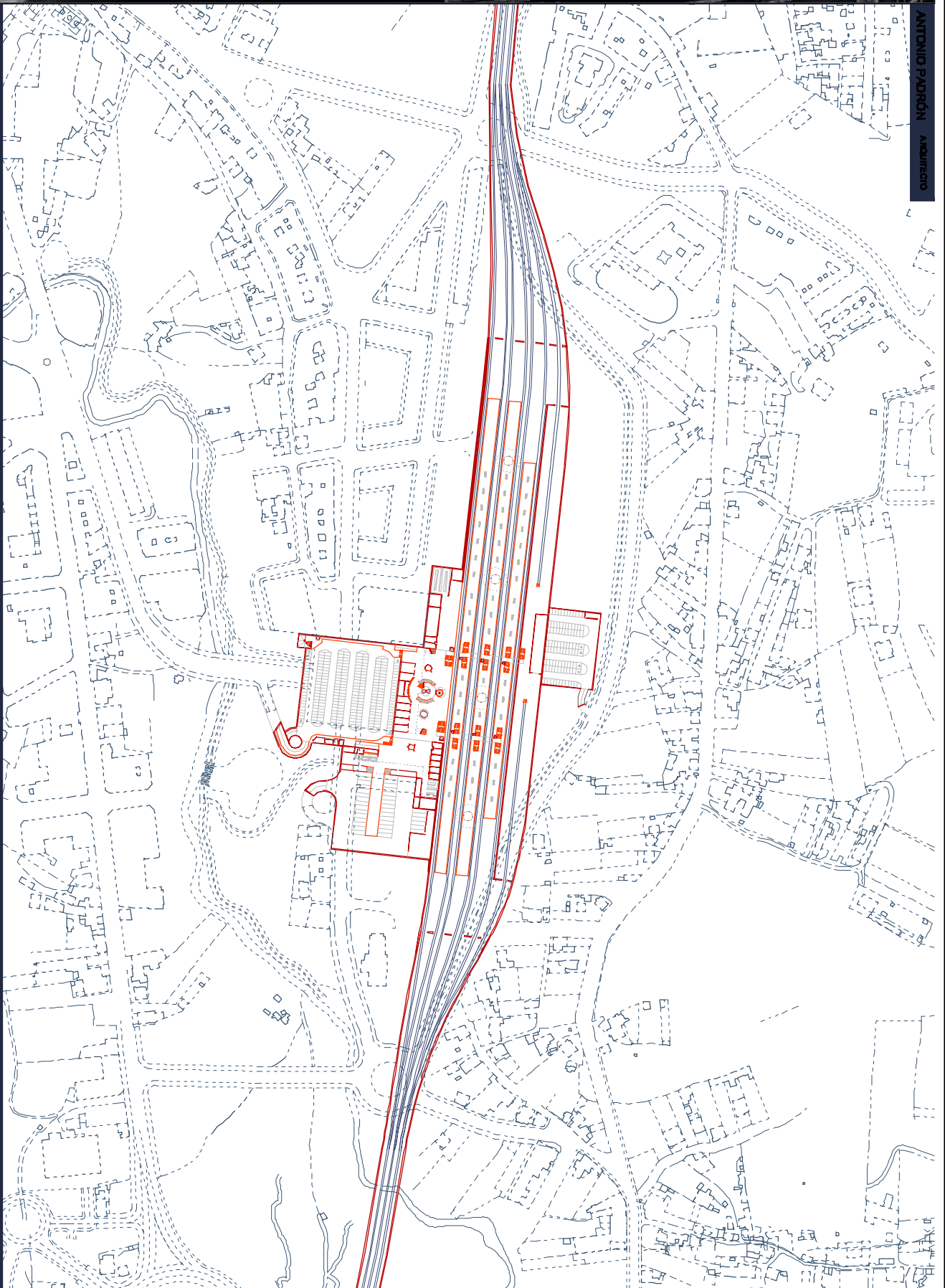
- TRAMO EN SUPERFICIE
- TRAMO EN TRINCHEIRA
- TRAMO SOTERRADO



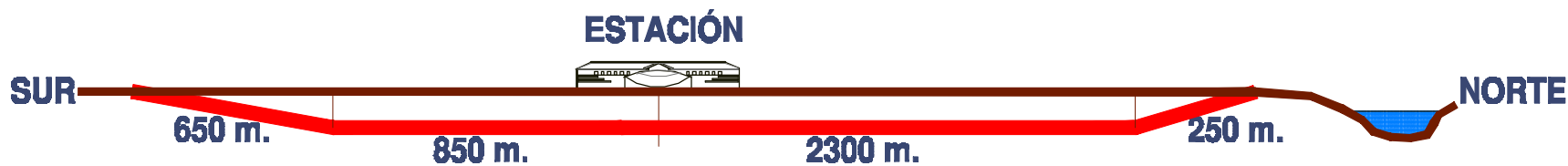
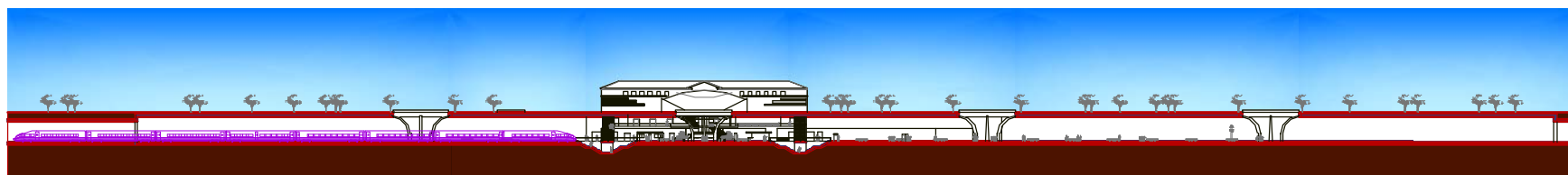
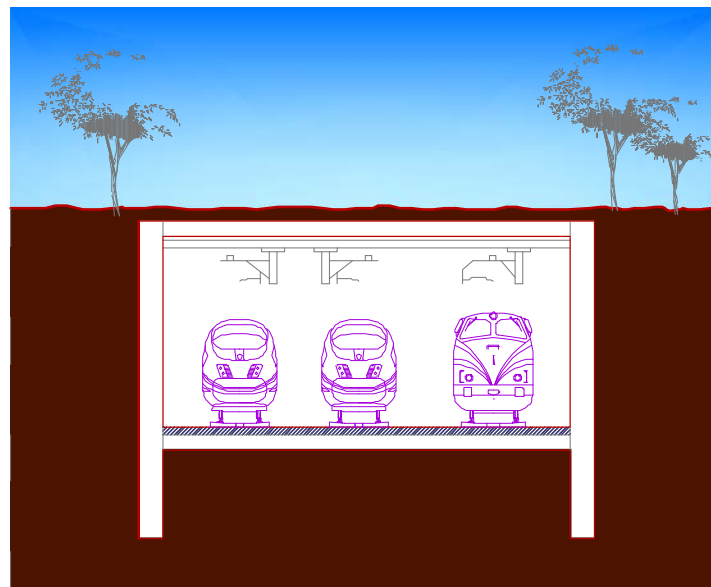
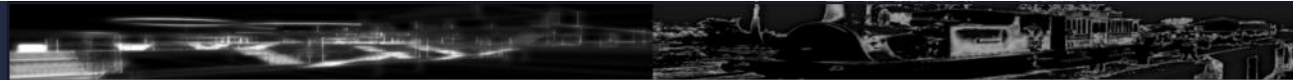
CENTRO INTERMODAL DE TRANSPORTES A PARDA



PLANTA DE SITUACIÓN

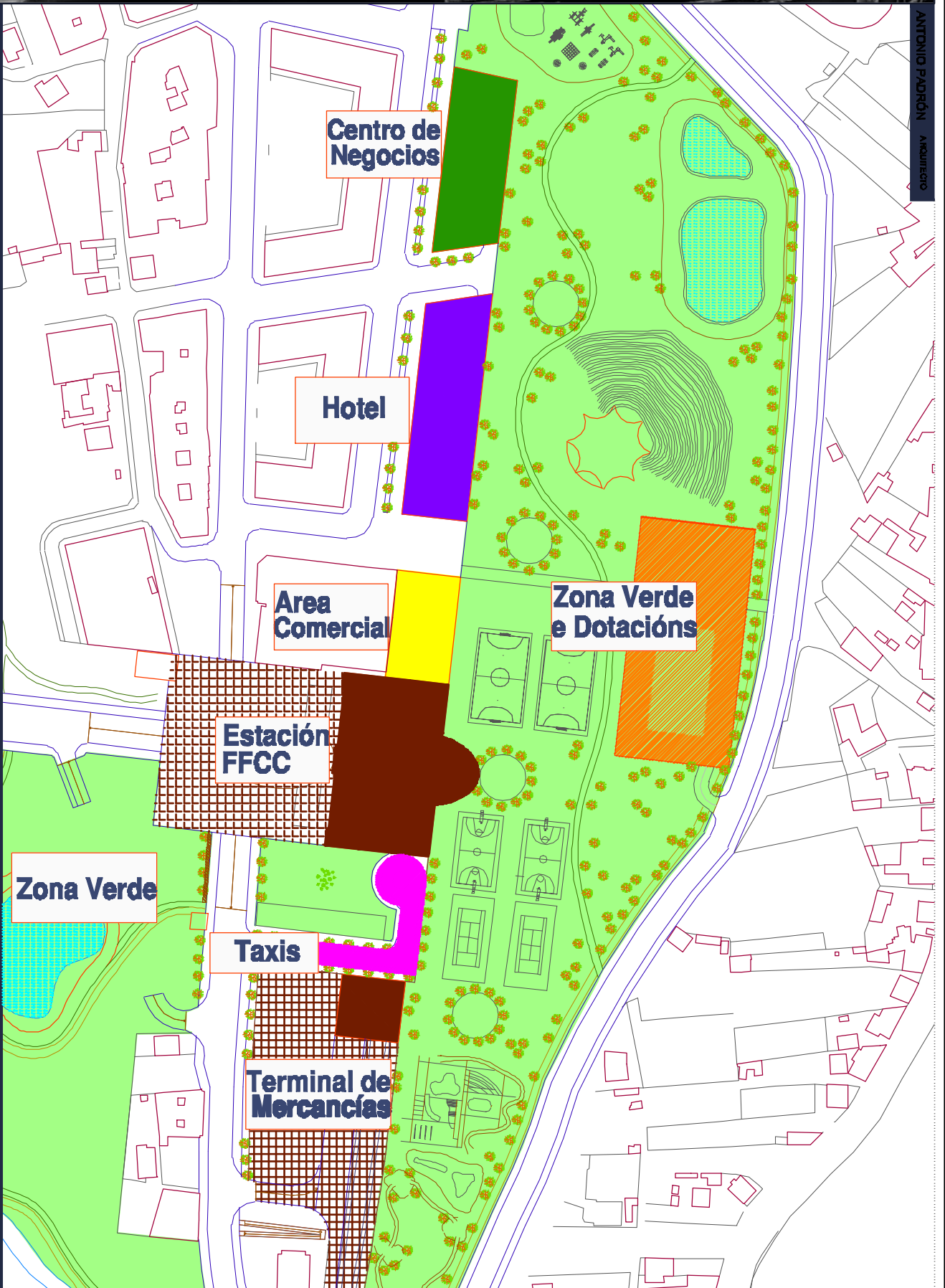


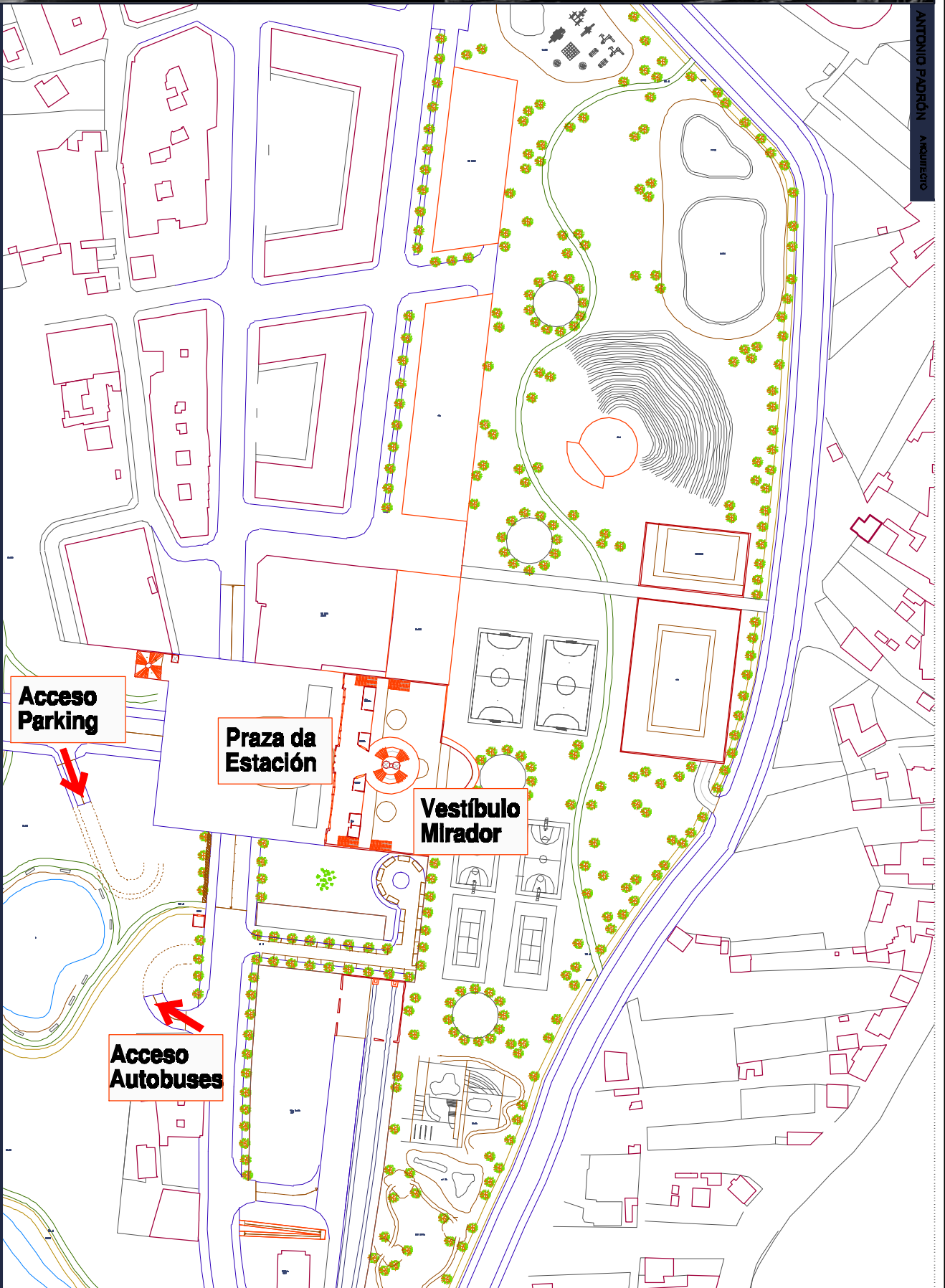
PLANTA DE SITUACIÓN - NIVEL SOTERRADO



SECCIÓN DO TRAMO DE VIA SOTERRADO

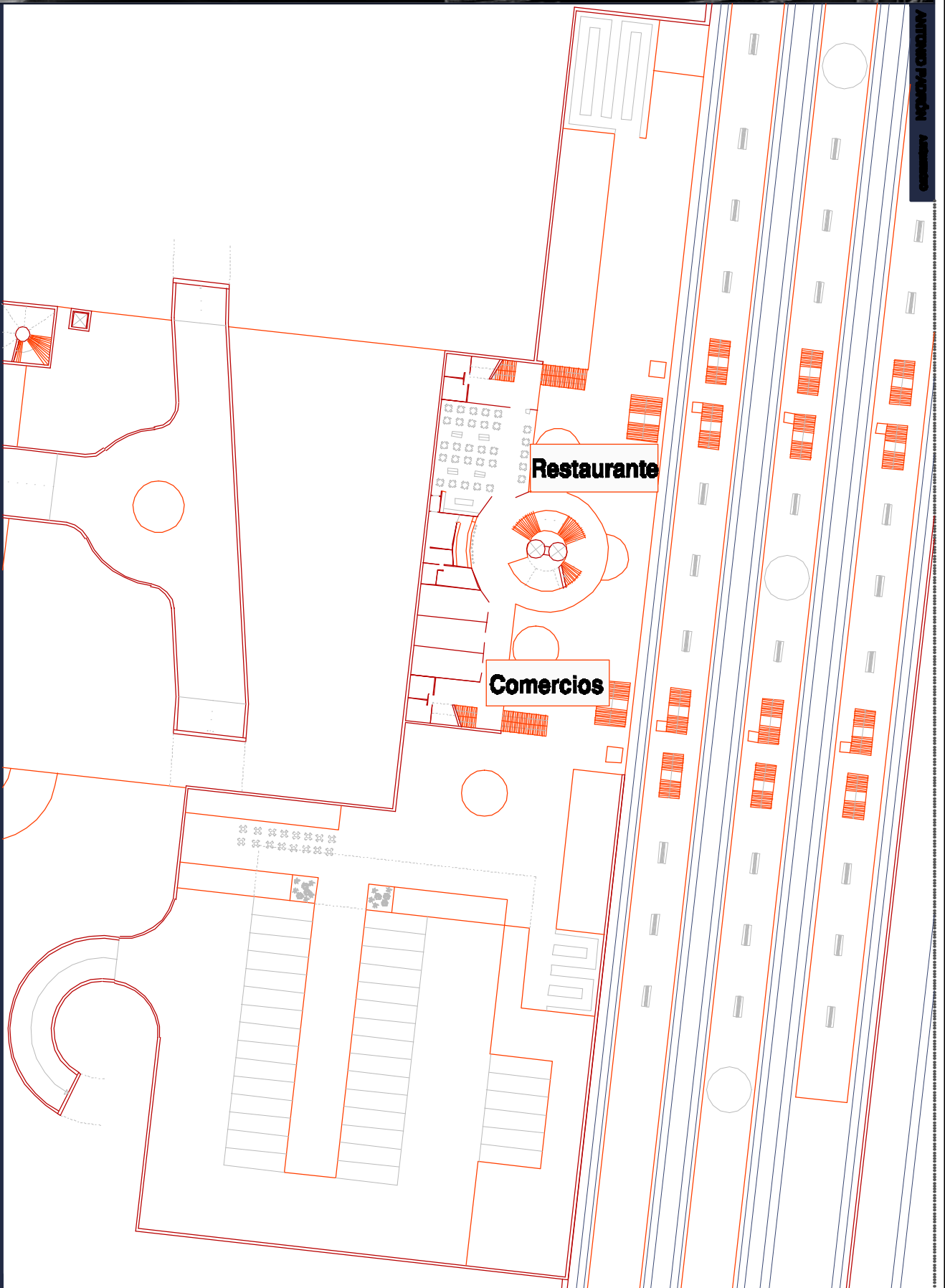
**ANCHURA DO RAMAL FERROVIARIO : 18 m.
PENDENTE : 1,2 %**





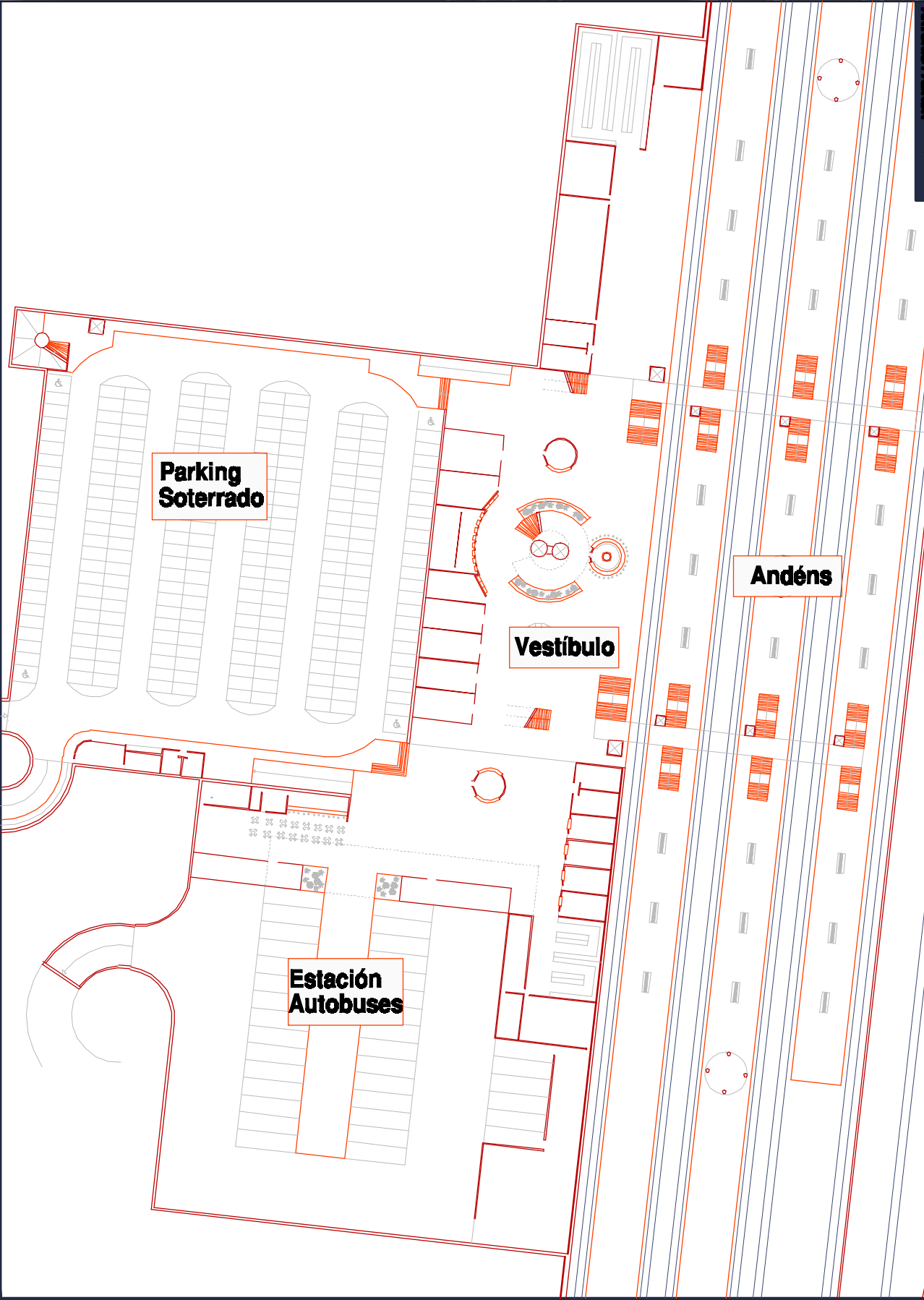
PLANTA NIVEL DA RUA

CENTRO INTERMODAL DE TRANSPORTES A PARDA



ANTONIO PASCUAL
ARQUITECTO

ENTREPLANTA

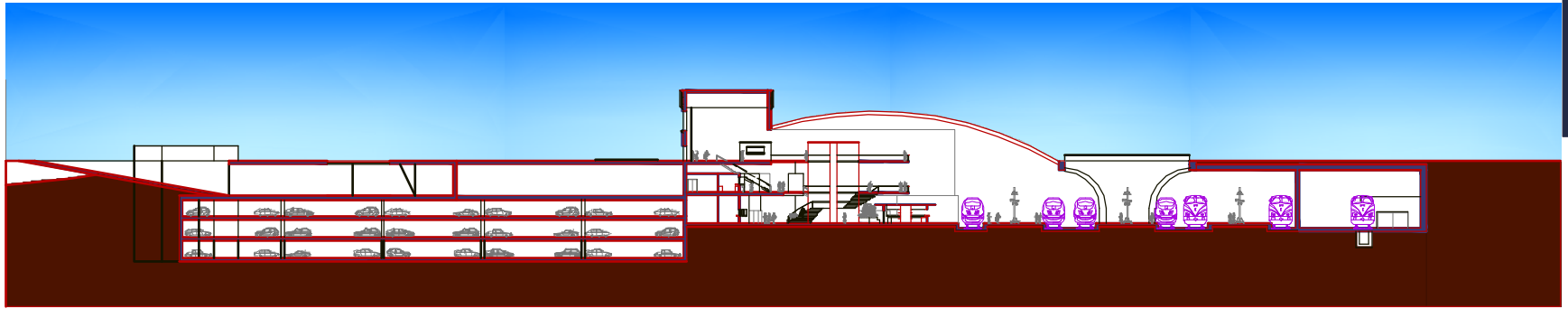
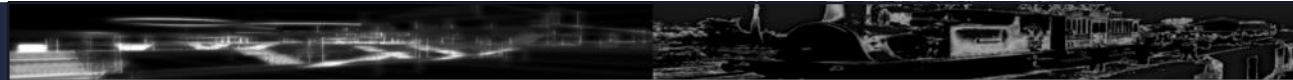


Parking Soterrado

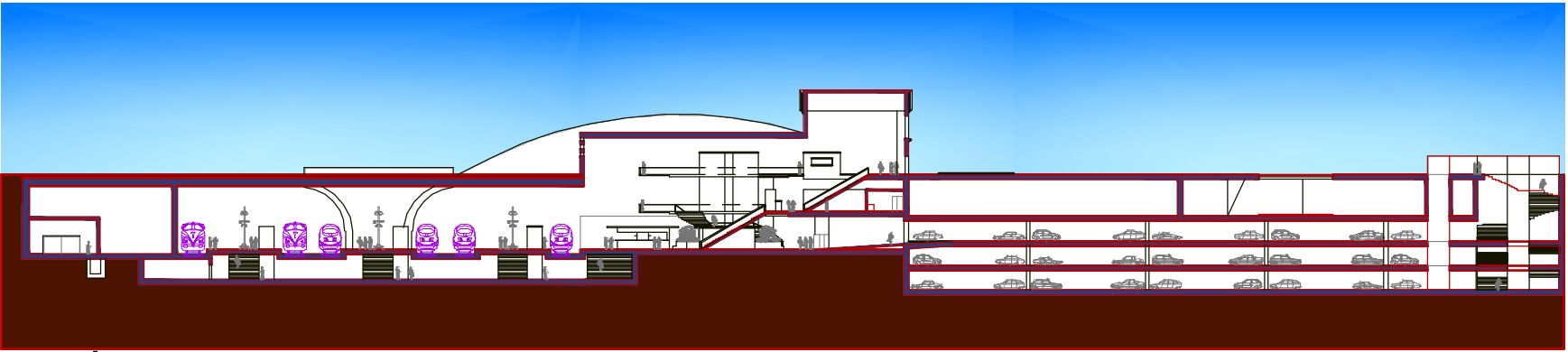
Vestíbulo

Estación Autobuses

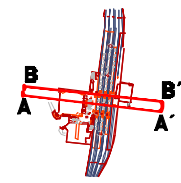
Andéns

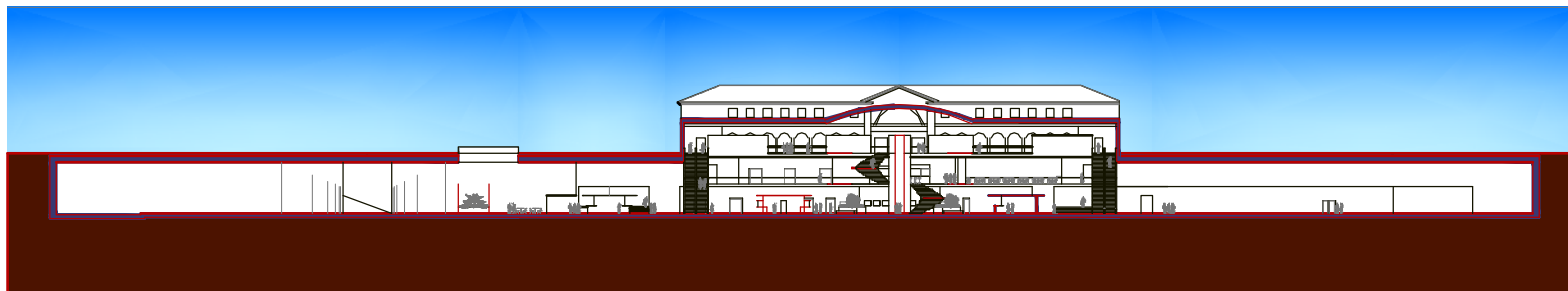
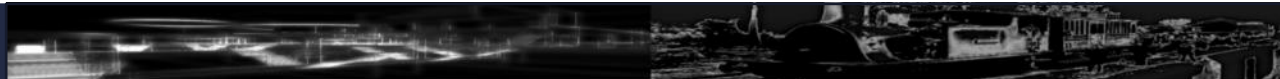


SECCIÓN A-A'

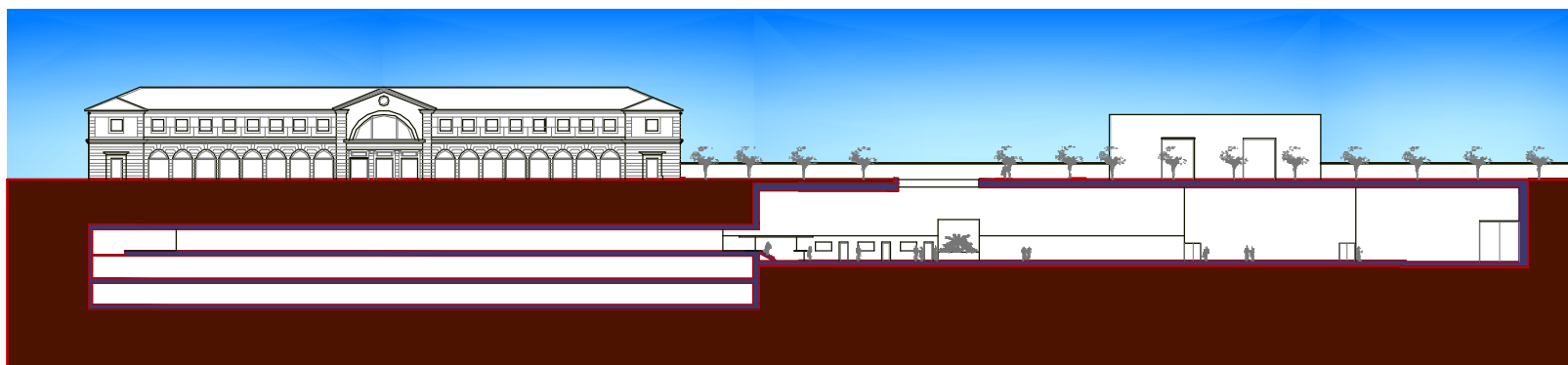


SECCIÓN B-B'





SECCIÓN C-C'



SECCIÓN D-D'

